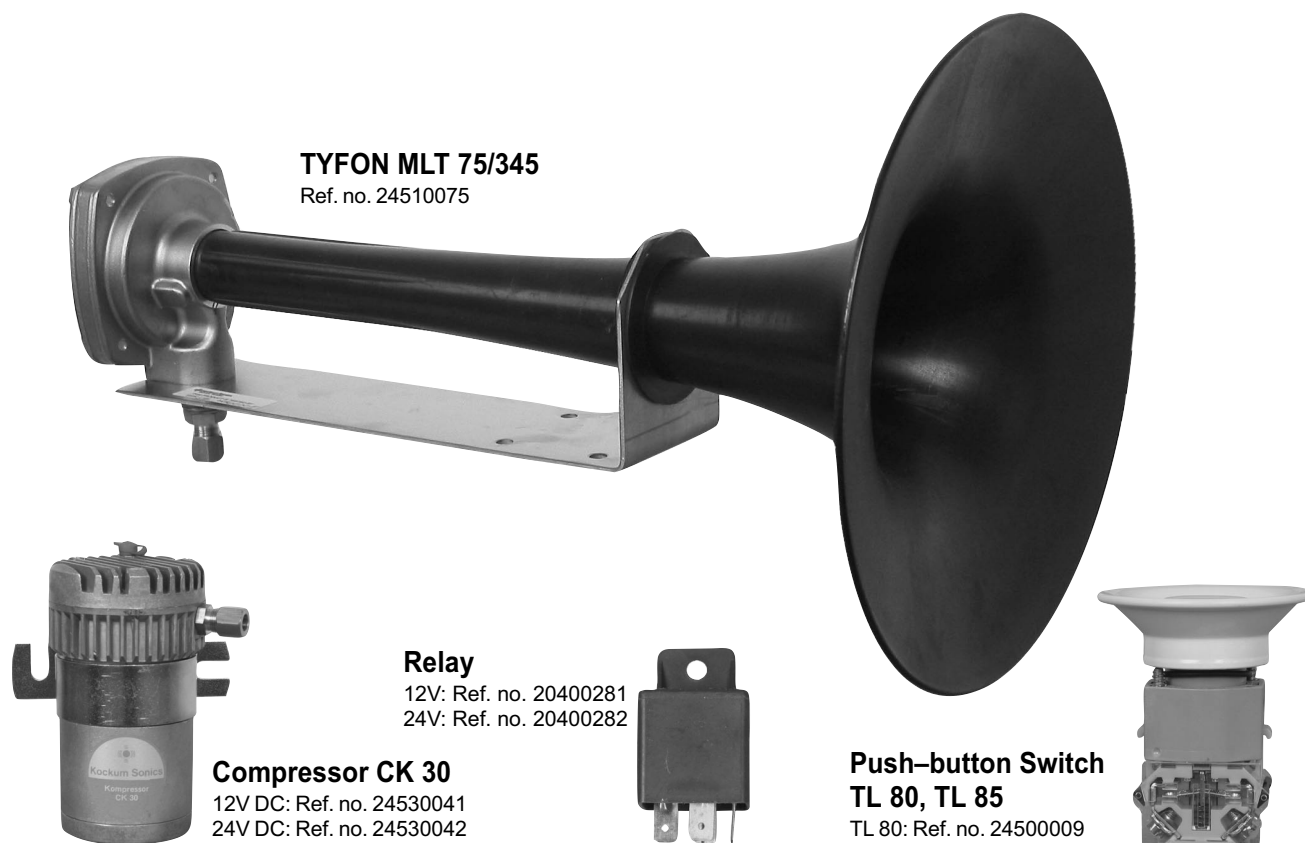


# TYFON® MLT 75/345

with Compressor CK 30 and  
Push-button Switch TL 80 or TL 85

**Signalling whistle for vessels up to 20m in length**



## General Information

The signalling whistle TYFON type MLT 75/345 with Compressor CK 30 and Push-button Switch TL 80 or TL 85 for vessels up to 20m in length overall is especially made to meet the IMO requirements. The principle items are:

- Electrically driven, 12 alternatively 24 V battery voltage. Pressurized air is not required on board.
- A real TYFON sound, harmonic and penetrating. This particular design of TYFON type MLT 75/345 enables sound generating with a very high efficiency.
- Easy installation, no air tank or valve.
- Low electrical power consumption in relation to the sound power (totally approximately 126 dB). IMO limit is 120dB within one 1/3 octave.

TYFON type MLT 75/345 is fitted with a support bracket for horizontal mounting and with fittings for connection to a 8/6 mm copper pipe. A bracket for vertical mounting can be supplied on request. The distance (pipe length)

to CK 30 must not be more than 3 m to minimize losses.

The design and materials are in conformity with our other well-known types of TYFON for vessels. On request, the whole whistle (excl. support bracket) can be delivered chrome-plated.

The Compressor CK 30 is an electrically driven sliding vane compressor. It is advisable to mount the compressor indoors to avoid freezing.

## Technical Data

Frequency: 345 Hz

Sound Pressure Level:

Total: 126 dB

IMO limit (1/3 octave): 120 dB

Power consumption at 12 or 24 V DC: 200 W

Weight:

TYFON with bracket: 1,5 kg

Compressor: 1,6 kg

Push-button switch: 0,1 kg

For Push-button Switches TL 80 and TL 85, see separate leaflet.

Postal Address

Address

Telephone

Telefax

Telex

**Kockum Sonics AB**

Box 1035

S-212 10 Malmö, Sweden

Industrigatan 39

Nat 040-671 88 00

Int + 46 40 67 1 88 00

Nat 040-21 65 13

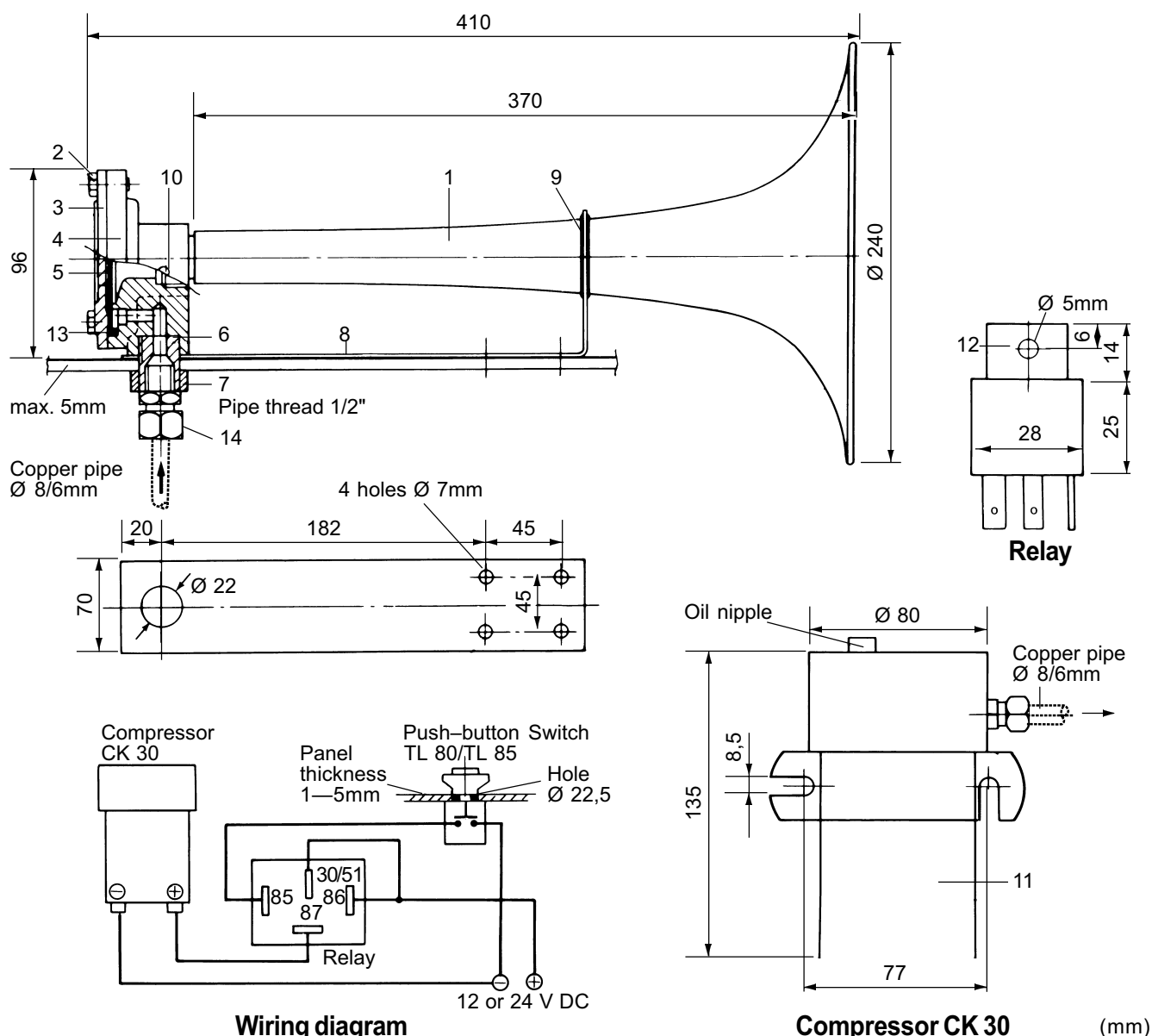
Int + 46 40 21 65 13

33792

**KSM 259E/0216**

Replaces KSM 259E/9918

# Spare Parts and Dimensions



## Mounting

In order to obtain a good all-round sound radiation, the whistle must be mounted as high and free as possible, according to the IMO regulations.

The compressor is to be mounted upright on a wall always accessible for lubrication. After mounting, fill the oil nipple with about 10 drops of thin oil from the oil can (included in delivery).

Connect a 8/6mm copper pipe (max length 3m) between the compressor and TYFON. The pipe shall be installed to avoid condense accumulation.

## Electric supply

Connect the compressor to the push-button switch and power supply, see wiring diagram. The relay is included in delivery. Respect compressor polarity!

The cable section for 12V should be min 4mm<sup>2</sup> and suitable fuse 20A. For 24V, the cable section should be min 2,5mm<sup>2</sup> and fuse 10A.

## Service

Lubricate the compressor periodically via the oil nipple using SAE 10 oil. Twice a year, drain the pipe line by loosening the bottom fittings.

### Parts MLT 75/345

No.	Name	Material	Ref. no.
1	Horn 345 Hz	Thermoplastic	21750053
2	Screw	Stainless steel	32570288
3	Cover	Brass	21754056
4	Housing	Brass	21754055
5	Diaphragm KM 75 LT	Titan/nitrile rubber	21758012
6	Connection	Brass	21772110
7	Nut	Brass	20864312
8	Support bracket	Stainless steel	32170085
9	Bushing	Rubber	32170256
10	Screw	Thermoplastic	20801950
11	Compressor 12V		24530041
	Compressor 24V		24530042
12	Relay 12V 30A		20400281
	Relay 24V 20A		20400282
13	O-ring Ø71 x 3	Rubber	20862071
14	Compression Connector	Brass	32301008

Spare parts can be obtained from Kockum Sonics or their agents. When ordering, please, give reference number and part name.

Subject to alteration without notice.